

Line T13490

NOTE:
AdTau outcomes used in this MultiPlot were calculated
from the Z dB/dt data using 0.002 pV/Am^4 as the cutoff.

EM Z Component	
Channel Times (µs)	
1	120
2	141
3	167
4	198
5	234
6	281
7	339
8	406
9	484
10	573
11	682
12	818
13	974
14	1151
15	1370
16	1641
17	1953
18	2307
19	2745
20	3286
21	3911
22	4620
23	5495
24	6578
25	7828

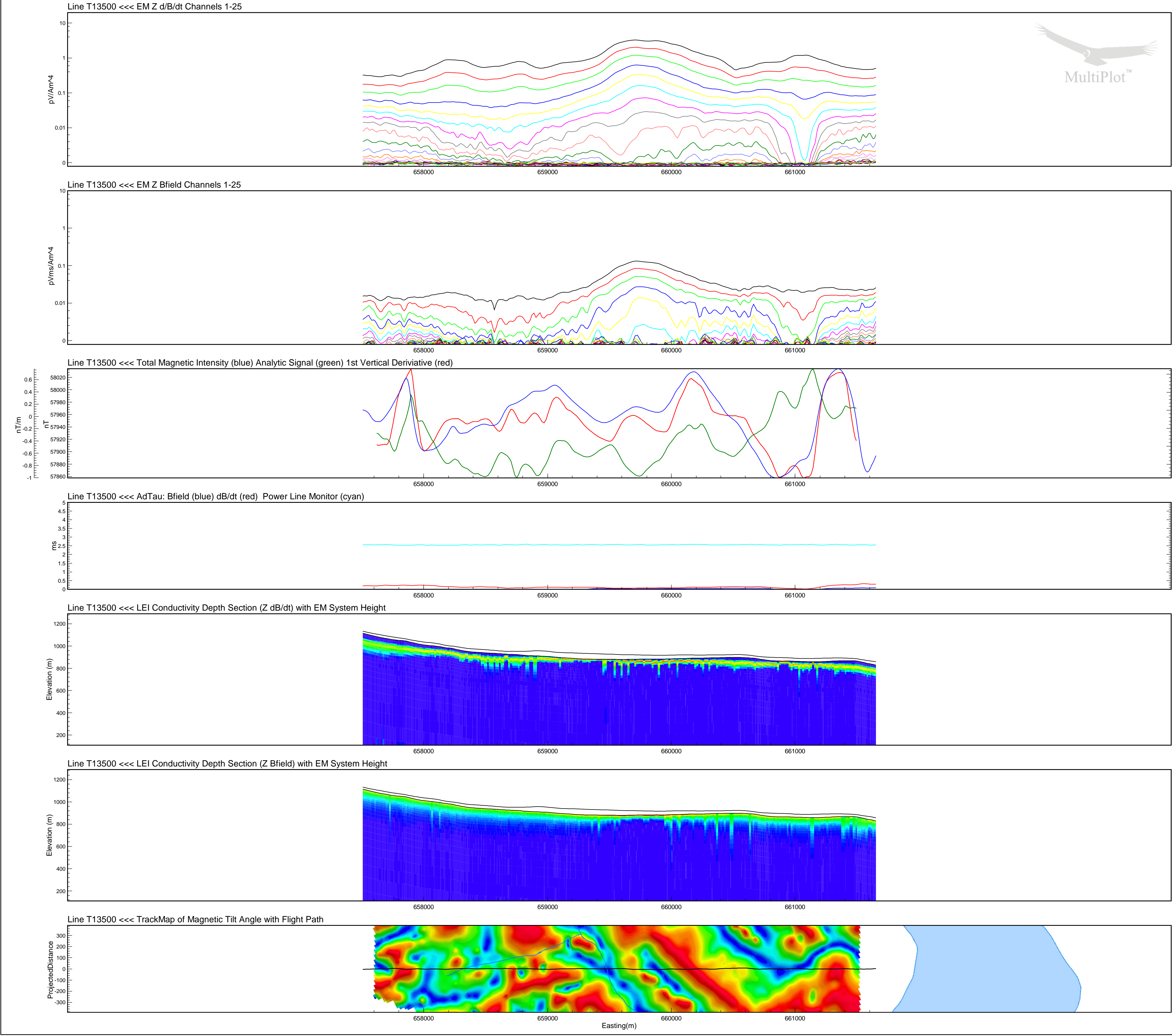
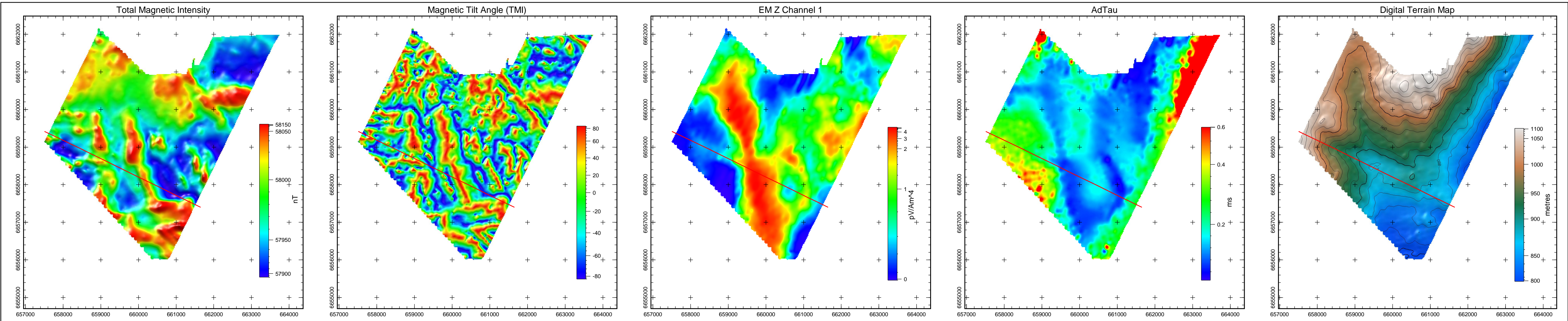


Tarsis Capital Corp
MOR Extension
Yukon
VTEM 30 Hz Survey

Flown: May - August 2008
Processed: January 2009



Condor Consulting Inc.
Lakewood, Colorado



Line T13500

NOTE:
AdTau outcomes used in this MultiPlot were calculated from the Z dB/dt data using 0.002 pV/Am⁴ as the cutoff.

EM Z Component Channel Times (µs)	
1	120
2	141
3	167
4	198
5	234
6	281
7	339
8	406
9	484
10	573
11	682
12	818
13	974
14	1151
15	1370
16	1641
17	1953
18	2307
19	2745
20	3286
21	3911
22	4620
23	5495
24	6578
25	7828

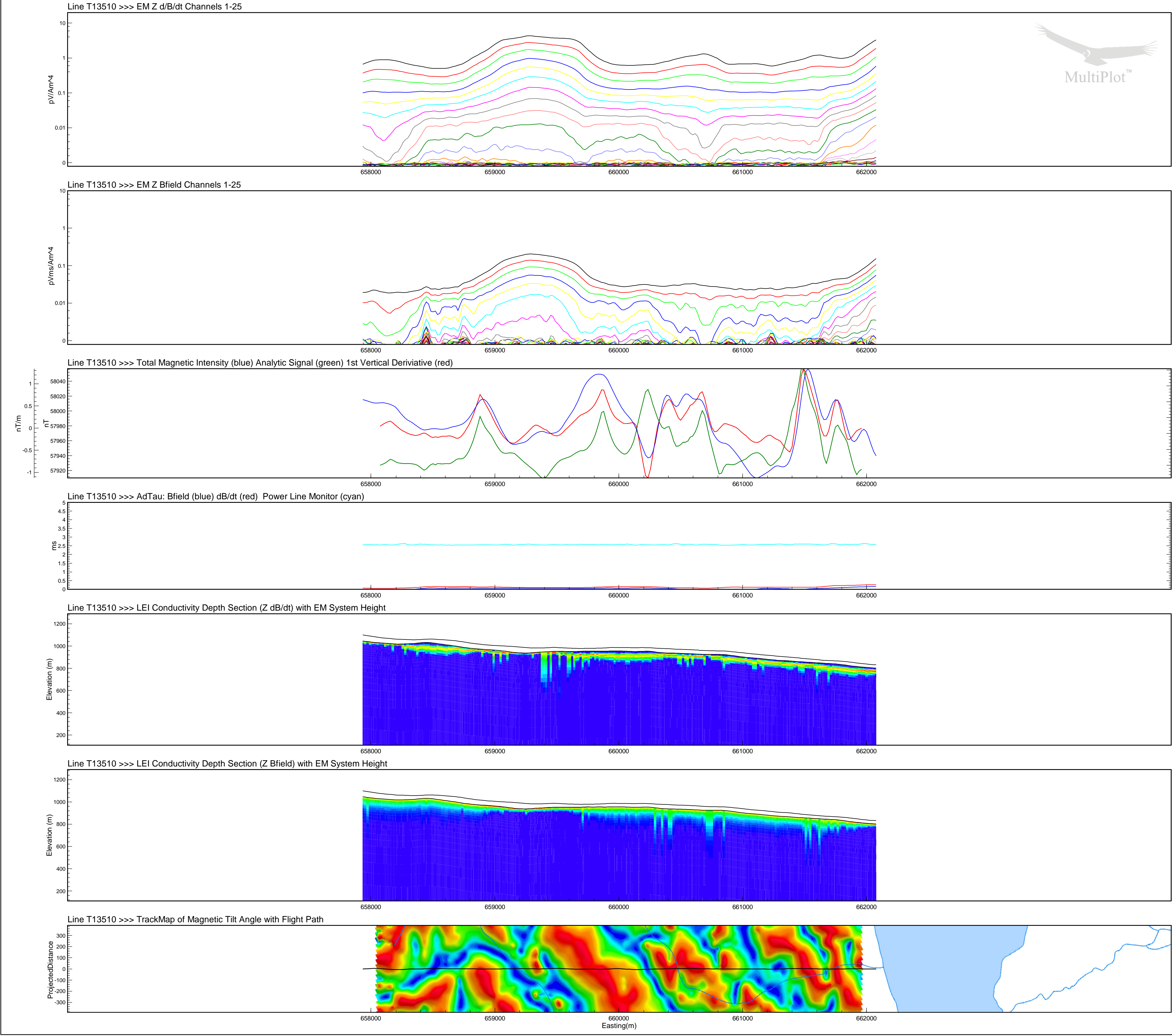
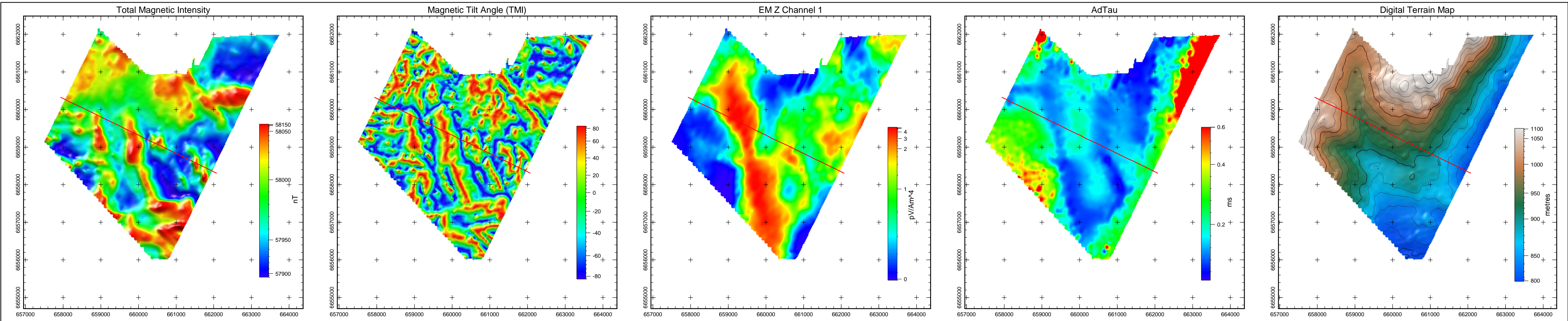


Tarsis Capital Corp
MOR Extension
Yukon
VTEM 30 Hz Survey

Flown: May - August 2008
Processed: January 2009



Condor Consulting Inc.
Lakewood, Colorado



Line T13510

NOTE:
AdTau outcomes used in this MultiPlot were calculated from the Z dB/dt data using 0.002 pV/Am⁴ as the cutoff.

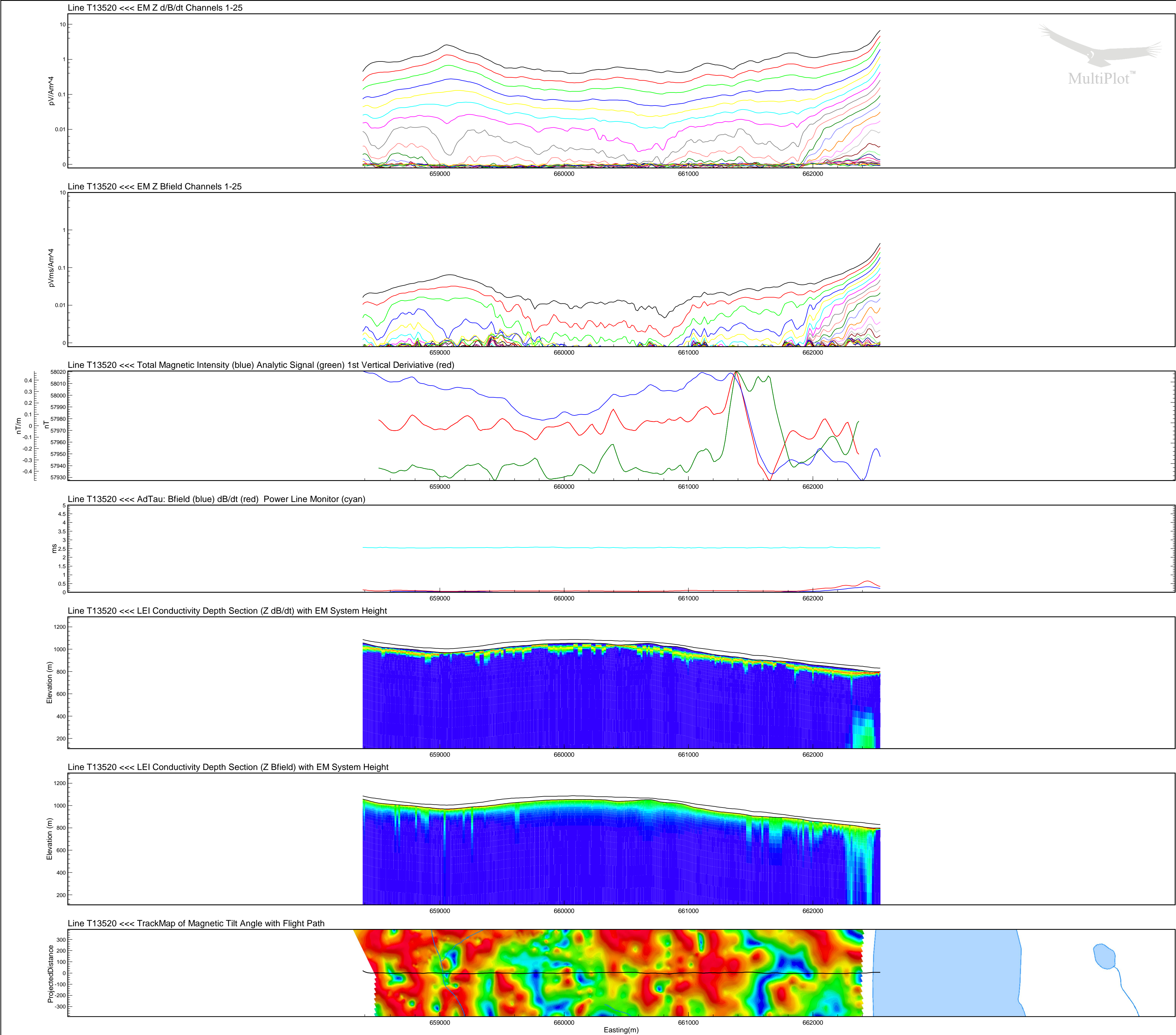
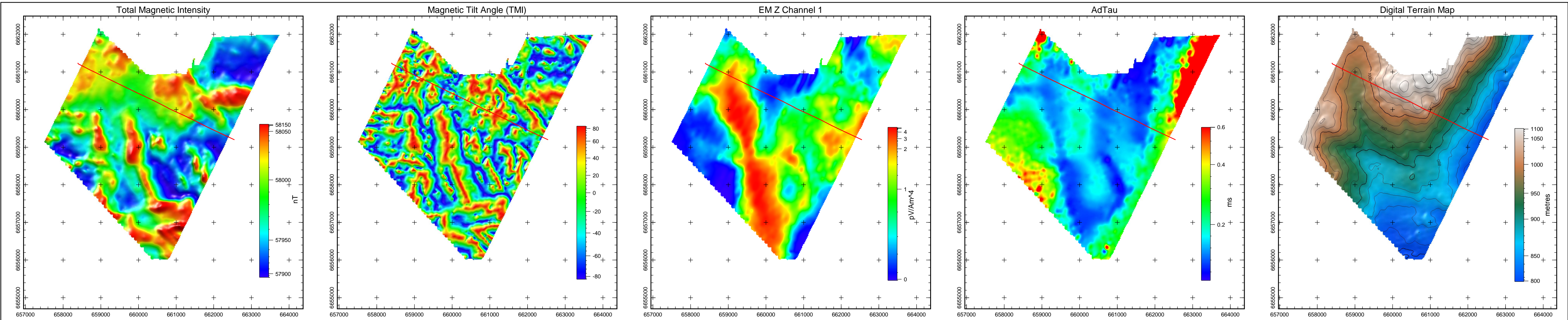
EM Z Component Channel Times (µs)	
1	120
2	141
3	167
4	198
5	234
6	281
7	339
8	406
9	484
10	573
11	682
12	818
13	974
14	1151
15	1370
16	1641
17	1953
18	2307
19	2745
20	3286
21	3911
22	4620
23	5495
24	6578
25	7828



Tarsis Capital Corp
MOR Extension
Yukon
VTEM 30 Hz Survey

Flown: May - August 2008
Processed: January 2009





Line T13520

NOTE:
AdTau outcomes used in this MultiPlot were calculated from the Z dB/dt data using 0.002 pV/Am⁴ as the cutoff.

EM Z Component Channel Times (µs)	
1	120
2	141
3	167
4	198
5	234
6	281
7	339
8	406
9	484
10	573
11	682
12	818
13	974
14	1151
15	1370
16	1641
17	1953
18	2307
19	2745
20	3286
21	3911
22	4620
23	5495
24	6578
25	7828

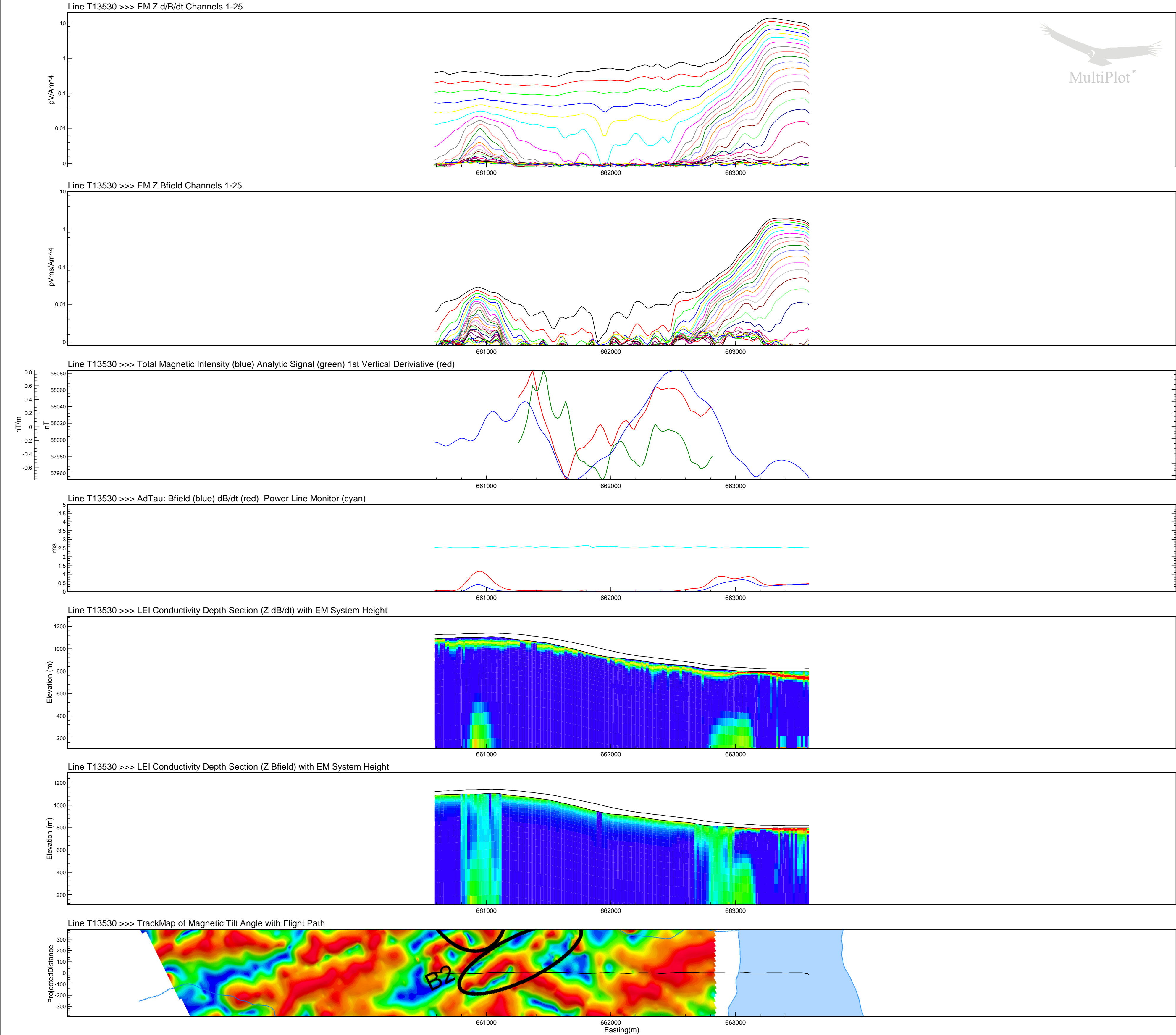
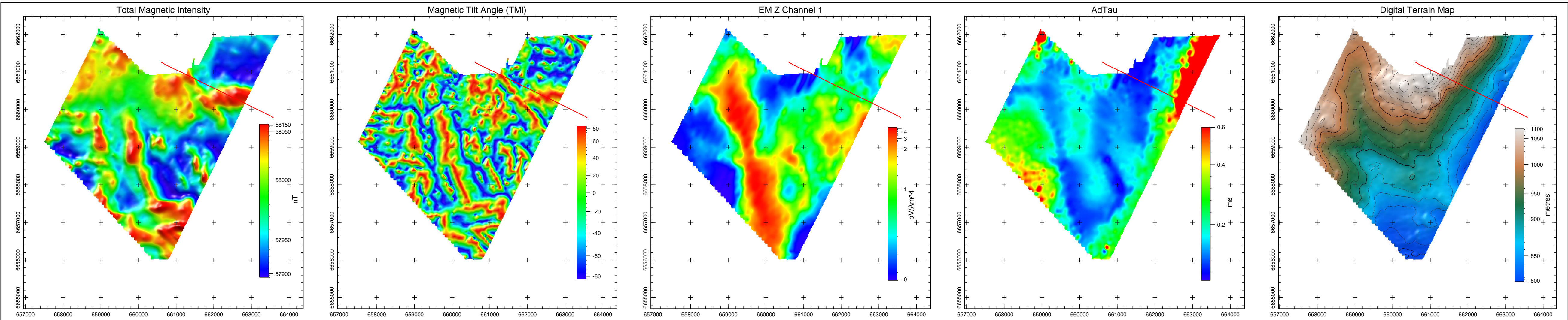


Tarsis Capital Corp
MOR Extension
Yukon
VTEM 30 Hz Survey

Flown: May - August 2008
Processed: January 2009



Condor Consulting Inc.
Lakewood, Colorado



Line T13530

NOTE:
AdTau outcomes used in this MultiPlot were calculated from the Z dB/dt data using 0.002 pV/Am⁴ as the cutoff.

EM Z Component Channel Times (µs)	
1	120
2	141
3	167
4	198
5	234
6	281
7	339
8	406
9	484
10	573
11	682
12	818
13	974
14	1151
15	1370
16	1641
17	1953
18	2307
19	2745
20	3286
21	3911
22	4620
23	5495
24	6578
25	7828

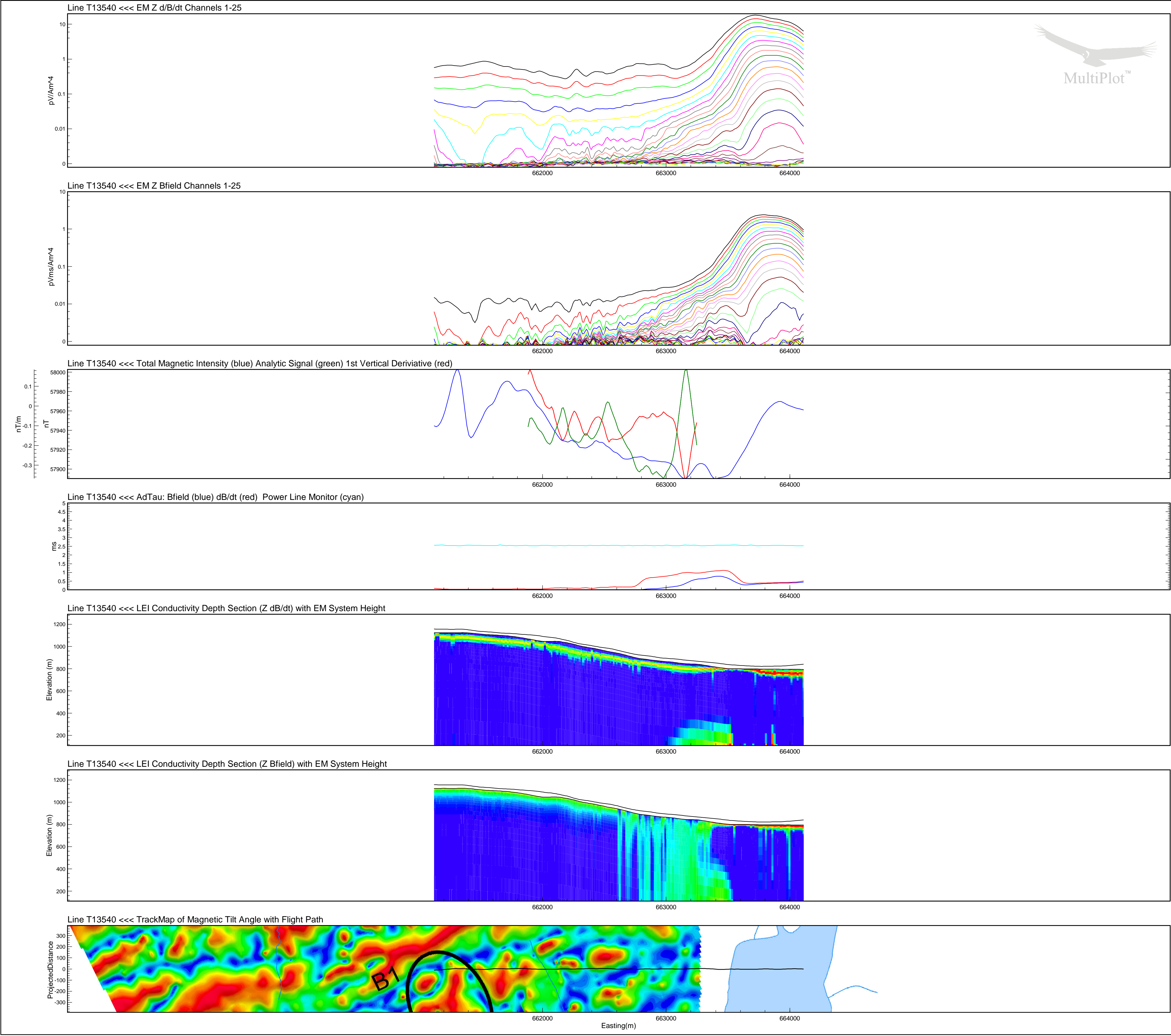
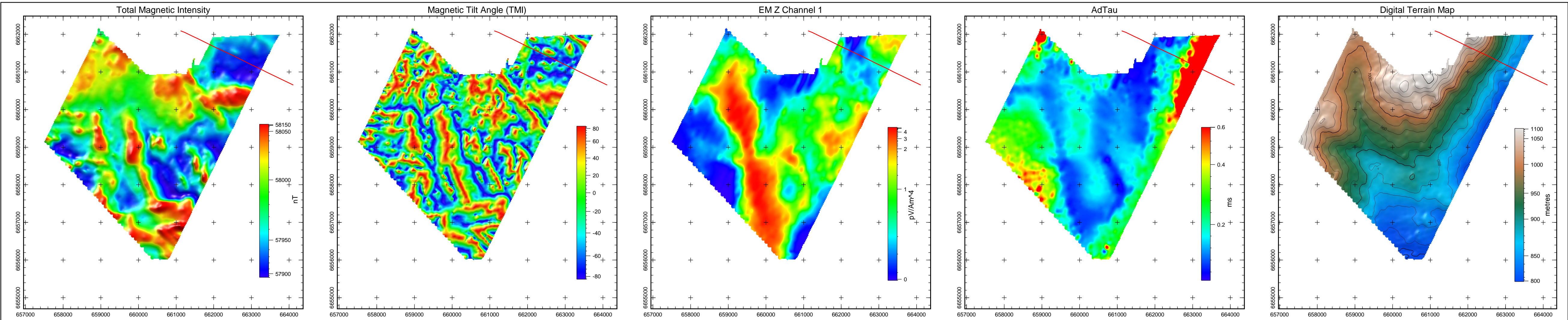


Tarsis Capital Corp
MOR Extension
Yukon
VTEM 30 Hz Survey

Flown: May - August 2008
Processed: January 2009



Condor Consulting Inc.
Lakewood, Colorado



Line T13540

NOTE:
AdTau outcomes used in this MultiPlot were calculated from the Z dB/dt data using 0.002 pV/Am⁴ as the cutoff.

EM Z Component Channel Times (µs)	
1	120
2	141
3	167
4	198
5	234
6	281
7	339
8	406
9	484
10	573
11	682
12	818
13	974
14	1151
15	1370
16	1641
17	1953
18	2307
19	2745
20	3286
21	3911
22	4620
23	5495
24	6578
25	7828



Tarsis Capital Corp
MOR Extension
Yukon
VTEM 30 Hz Survey

Flown: May - August 2008
Processed: January 2009



Condor Consulting Inc.
Lakewood, Colorado